

# Las Palmeras

Referens 119927



PORTA MALLORQUINA®

Your home. Our passion.

## Imposing villa with pool near to the coast in Ses Palmeras

Byggyta:	521 m <sup>2</sup>	Pool:	✓
Tomt:	2.157 m <sup>2</sup>	Energicertifikat:	pågående
Sovrum:	5		
Badrum:	5		
Havsutsikt:	✓	<b>Pris:</b>	<b>€ 1.250.000,-</b>



## Las Palmeras Referens 119927



### Detaljer:

This imposing villa, standing on a plot of 2.150 sqm, is situated in Las Palmeras only a few kms from Playa de Palma, and offers ample space for 3 family generations with a living area of 521 sqm.

From a total of 10 large rooms 5 bedrooms and 5 bathrooms are furnished, and there are also offices, a gym, recreation rooms and a laundry room.

The beautiful garden is laid out with numerous trees including olive, eucalyptus and fruit trees.

On the ground floor an entrance area leads into an exceptionally large living room with oversized windows overlooking the garden, the large adjacent kitchen with dining room and utility room, and a double bedroom with en-suite bathroom and views of the pool. On this level there is also a staff apartment with a bathroom.

The pool has an hydrolysis system and a generous size of 4 x 11 metres.

Housed on the first floor are 4 further bedrooms with bathrooms en suite, and office rooms, all with access to a terrace or balcony, and the 2nd floor has a further spacious room with terrace and beautiful views over the bay of Palma as far as the Tramuntana mountains.

All rooms have air conditioning and oil-fired central heating, and there are 4 solar panels for the warm water supply.

Further features include a 2-car garage and supplementary parking spaces.

## Las Palmeras Referens 119927



### Läge & omgivningar:

In terms of surface area, Lluçmajor is the largest municipal county on the island of Majorca and is located in the south. Its population amounts to 20,000 inhabitants.

The small city includes 4 supermarkets, some well loved cafés and tapa-bars, and even a thrice-weekly fruit and vegetable market, taking place in the very recently renovated town centre, with its Plaza de España and the second largest church on the island.

The picturesque hill-location of Randa on the mountain of the same name, which is the most elevated point in the island's centre, houses three sanctuaries, and is located slightly north of the town. Lluçmajor has developed into an economic and popular residential location, due to the new motor-way connection to Palma. The Marriott Son Antem Golf Resort and Spa, and nearby yacht clubs make Lluçmajor an interesting and central location for planning pass-times and excursions.

The Es Trenc natural beach, one of the nicest on the island and with a Caribbean similarity, lies just 15 car minutes from Lluçmajor.

# Las Palmeras

Referens 119927



All information is correct to the best of our knowledge. Errors and prior sale excepted. This prospectus is purely for information purposes. Only the notarized deed of sale is legally binding.

# Las Palmeras

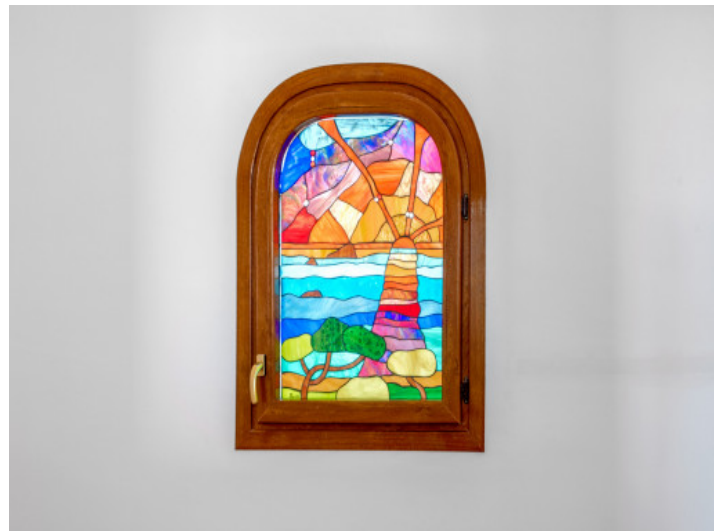
Referens 119927



All information is correct to the best of our knowledge. Errors and prior sale excepted. This prospectus is purely for information purposes. Only the notarized deed of sale is legally binding.

# Las Palmeras

Referens 119927



All information is correct to the best of our knowledge. Errors and prior sale excepted. This prospectus is purely for information purposes. Only the notarized deed of sale is legally binding.

# Las Palmeras

Referens 119927



All information is correct to the best of our knowledge. Errors and prior sale excepted. This prospectus is purely for information purposes. Only the notarized deed of sale is legally binding.