

# Llucmajor

## Referens 120313

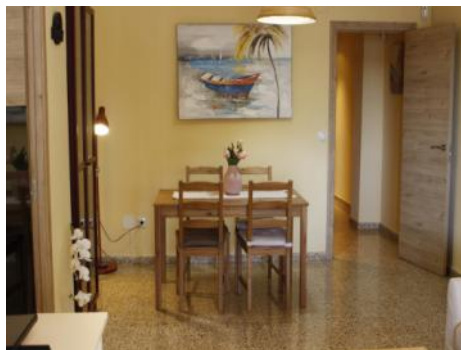


PORTA MALLORQUINA®

Your home. Our passion.

### Comfortable sea-view apartment in S'Arenal only a few steps from the beach

Byggyta:	136 m <sup>2</sup>	Pool:	✓
Sovrum:	3	Energicertifikat:	a
Badrum:	2		
Balkong/Terrass:	✓		
Havsutsikt:	✓	<b>Pris:</b>	<b>€ 460.000,-</b>



## Llucmajor

### Referens 120313



### Detaljer:

Welcome to Paradise, the sunshine and a life on the beach! This lovely south-facing apartment will fulfill all your dreams of a Mediterranean way of life.

It is equipped with 3 bedrooms, 2 of which are spacious doubles, 2 stylish bathrooms, and an inviting living room with access to 2 appealing terraces. The first is covered and has an area of approx. 30 sqm, the ideal place to spend relaxing time. The second terrace offers enchanting side views of the glittering bay, and will surely quickly become the favourite place to enjoy unforgettable sunsets.

This seaside jewel is offered for sale fully furnished and can be occupied immediately, so that your dream of a beach domicile can be fulfilled without delay. It would also be a great opportunity for use as a lucrative rental investment object to take advantage of the high demand for comfortable beachside properties.

Further facilities of this wonderful apartment include a practical laundry room, an osmosis water filter, a reliable alarm/security system, and wifi/internet.

The charming property, built in 1979 and equipped with modern comfort, has a generous area of 136 sqm and is in an excellent, lovingly maintained condition, immediately ready to become your new home in the sun.

Seize the moment, and enjoy life in the sun in this enchanting apartment - your personal piece of paradise on Mallorca's wonderful coast.

Please do not hesitate to contact us today to secure your chance!

# Llucmajor

## Referens 120313



### Läge & omgivningar:

In terms of surface area, Llucmajor is the largest municipal county on the island of Majorca and is located in the south. Its population amounts to 20,000 inhabitants.

The small city includes 4 supermarkets, some well loved cafés and tapa-bars, and even a thrice-weekly fruit and vegetable market, taking place in the very recently renovated town centre, with its Plaza de España and the second largest church on the island.

The picturesque hill-location of Randa on the mountain of the same name, which is the most elevated point in the island's centre, houses three sanctuaries, and is located slightly north of the town. Llucmajor has developed into an economic and popular residential location, due to the new motor-way connection to Palma. The Marriott Son Antem Golf Resort and Spa, and nearby yacht clubs make Llucmajor an interesting and central location for planning pass-times and excursions.

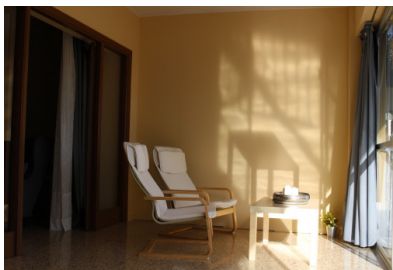
The Es Trenc natural beach, one of the nicest on the island and with a Caribbean similarity, lies just 15 car minutes from Llucmajor.

Llucmajor  
Referens 120313



All information is correct to the best of our knowledge. Errors and prior sale excepted. This prospectus is purely for information purposes. Only the notarized deed of sale is legally binding.

**Llucmajor**  
Referens 120313



Escala de la calificación energética	Consumo de energía kWh/m <sup>2</sup> año	Emisiones kg CO <sub>2</sub> /m <sup>2</sup> año
<b>A</b> más eficiente	0.00	300.00
<b>B</b>		
<b>C</b>		
<b>D</b>		
<b>E</b>		
<b>F</b>		
<b>G</b> menos eficiente		

All information is correct to the best of our knowledge. Errors and prior sale excepted. This prospectus is purely for information purposes. Only the notarized deed of sale is legally binding.