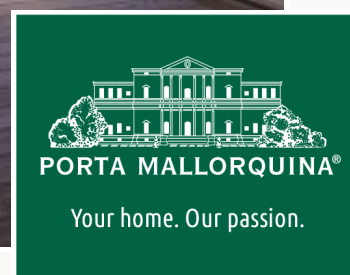


Bonanova
Referens 116632C

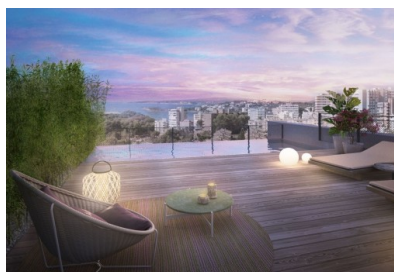


Palma Sea View - Luxury residential project with highest standards duplex, garden & pool

Byggyta:	120 m ²	Pool:	✓
Sovrum:	3	Energicertifikat:	pågående
Badrum:	2		
Balkong/Terrass:	✓		
Havsutsikt:	✓	Pris:	€ 760.000,-



Bonanova Referens 116632C



Detaljer:

Parallel East & West' presents itself with 2 innovative buildings, each with 6 luxury flats, which optionally have a private swimming pool, their own garden or a protected roof terrace with panoramic views over the bay of Palma, Cala Major and Illetas.

Architectural aesthetics, contemporary, respectful sustainability, highest energy efficiency as well as a harmonious embedding in the natural environment have been combined at an outstanding level in this special residential project.

The building ensemble is located between the polarities of "Panorama Palma Bay" and "Bellver Castle".

This oasis of well-being on 2 levels has a total area of 120 sqm, distributed in 2 bedrooms on the second floor, a bathroom, a bedroom with bathroom en suite and a utility room. On this floor you can enjoy the panoramic view of Palma.

On the first floor there is a guest toilet in the entrée. Attached to the kitchen and living area is an integrating terrace and the garden area of 48 sqm with pool.

There is also a fully equipped air-conditioned fitness area.

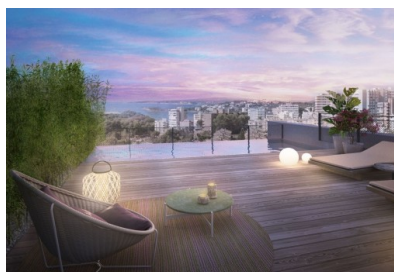
A garage spaces with storage room is included in the purchase price.

Orientation: E/W

The property is already under construction and is expected to be completed in October 2021.

Bonanova

Referens 116632C



Läge & omgivningar:

Due to its elevated location, bordering with the wonderful Parc de Bellver with the famous Bellver castle, the beautiful area of Bonanova provides wonderful views over the whole of the bay of Palma, the open sea and the mountains.

This villa district, although centrally located and with superb connections to the centre of Palma by car or bus, is one of the quietest and most secure districts of Palma. It offers, therefore, the possibility to live in a peaceful area but still be able to easily enjoy all the facilities of the town with its restaurants, bars, cafes and shops.

In addition this neighbourhood itself offers exquisite gastronomy, supermarkets, sports locations and clinics, all close by. The shopping centre of Porto Pi, for example, is only a few minutes away by car and offers a huge choice of shops and restaurants. Lovely beaches such as that in Cala Major are also only a few minutes away by car. Bonanova, furthermore, is also ideal for children with the 'Queen's College' which enjoys an excellent reputation internationally.

Bonanova
Referens 116632C



All information is correct to the best of our knowledge. Errors and prior sale excepted. This prospectus is purely for information purposes. Only the notarized deed of sale is legally binding.

Bonanova
Referens 116632C

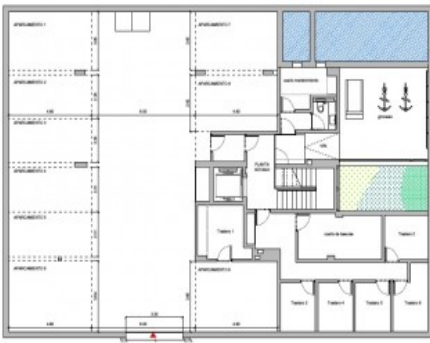


VIVIENDA 03
SECT: PLANTA BAJA Y PRIMERA
SECT DE DE CONSTRUCCION: 100%
SUPERFICIES: 110,00 M² (110,00 M²)

DESCRIPCION	VALOR
SUPERFICIE CONSTRUIDA	110,00 M ²
SUPERFICIE TOTAL	110,00 M ²
SUPERFICIE DE PLANTA BAJA	55,00 M ²
SUPERFICIE DE PLANTA PRIMERA	55,00 M ²
SUPERFICIE DE PLANTA SEGUNDA	0,00 M ²
SUPERFICIE DE PLANTA TERCERA	0,00 M ²
SUPERFICIE DE PLANTA CUARTA	0,00 M ²
SUPERFICIE DE PLANTA QUINTA	0,00 M ²
SUPERFICIE DE PLANTA SEXTA	0,00 M ²
SUPERFICIE DE PLANTA SEPTIMA	0,00 M ²
SUPERFICIE DE PLANTA OCTAVA	0,00 M ²
SUPERFICIE DE PLANTA NOVENA	0,00 M ²
SUPERFICIE DE PLANTA DECIMA	0,00 M ²
SUPERFICIE DE PLANTA ONCE	0,00 M ²
SUPERFICIE DE PLANTA DOCE	0,00 M ²
SUPERFICIE DE PLANTA TRECE	0,00 M ²
SUPERFICIE DE PLANTA CATORCE	0,00 M ²
SUPERFICIE DE PLANTA QUINCE	0,00 M ²
SUPERFICIE DE PLANTA DIECISEIS	0,00 M ²
SUPERFICIE DE PLANTA DIECISIETE	0,00 M ²
SUPERFICIE DE PLANTA DIECIOCHO	0,00 M ²
SUPERFICIE DE PLANTA DIECINUEVE	0,00 M ²
SUPERFICIE DE PLANTA VEINTI	0,00 M ²
SUPERFICIE DE PLANTA VEINTIUN	0,00 M ²
SUPERFICIE DE PLANTA VEINTIDOS	0,00 M ²
SUPERFICIE DE PLANTA VEINTITRES	0,00 M ²
SUPERFICIE DE PLANTA VEINTICUATRO	0,00 M ²
SUPERFICIE DE PLANTA VEINTICINCO	0,00 M ²
SUPERFICIE DE PLANTA VEINTISEIS	0,00 M ²
SUPERFICIE DE PLANTA VEINTISIETE	0,00 M ²
SUPERFICIE DE PLANTA VEINTIOCHO	0,00 M ²
SUPERFICIE DE PLANTA VEINTINUEVE	0,00 M ²
SUPERFICIE DE PLANTA TREINTA	0,00 M ²

Planta 1
Planta Baja

APARCAMIENTOS Y TRASTEROS
PLAN DE SITIO
SUPERFICIE TOTAL: 110,00 M²



All information is correct to the best of our knowledge. Errors and prior sale excepted. This prospectus is purely for information purposes. Only the notarized deed of sale is legally binding.

Bonanova
Referens 116632C



All information is correct to the best of our knowledge. Errors and prior sale excepted. This prospectus is purely for information purposes. Only the notarized deed of sale is legally binding.

PORTA MALLORQUINA • C./ CONQUISTADOR 8, 07001 PALMA
TEL. +34 971 698 242 • INFO@PORTAMALLORQUINA.COM