

## Paseo Maritimo Referens 114890C



Your home. Our passion.

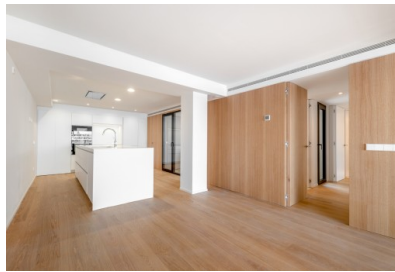
Centrally located new apartment, directly at the Paseo Maritimo, with quiet patio and terrace

Byggyta:	191 m <sup>2</sup>	Pool:	-
Sovrum:	2	Energicertifikat:	C
Badrum:	2		
Balkong/Terrass:	✓		
Havsutsikt:	✓	<b>Pris:</b>	<b>€ 1.000.000,-</b>



## Paseo Maritimo

### Referens 114890C



### Detaljer:

Here we offer you an apartment on the first floor of a completely renovated house, with an 8 sqm terrace, a quiet patio, 2 bedrooms and 2 bathrooms.

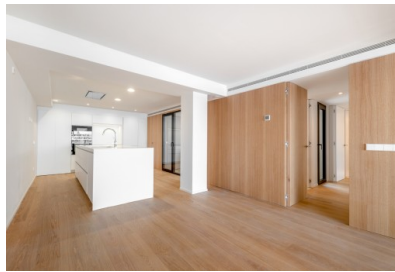
Dornbracht fittings are used in the bathroom, while the washbasin and the shower or even a bathtub are from Huguet. A fully furnished, white kitchen with Siemens appliances, a Silestone worktop and a damping system for all doors and drawers joins the bright and spacious living room. Individual design possibilities are given by the choice of different materials.

Other features include underfloor heating, electric shutters, integrated air conditioning and fibre optic internet connections. Optional: smart home control, sound system or USB sockets.

The freshly renovated house offers a traditional natural stone facade and is divided into 5 floors with 10 apartments, which are easily reached by elevator.

## Paseo Marítimo

### Referens 114890C



### Läge & omgivningar:

The Paseo Marítimo forms the borderline from the capital Palma towards the water and extends on about 6 kilometres from the military port of Porto Pi in the west, along the historic centre, the antique pier, the cathedral till the fisher harbour of Portixol in the east. Whilst some people take the bicycle or the roller blades, others are jogging or simply walk; all of them are enjoying meanwhile the fresh breeze on the waterfront. The promenade of Palma is one of the favoured meeting points for the people of the island and the life not only vibrates during the day. The attractive nightlife offers different kind of hip dancing clubs, fancy pubs, coffee shops and restaurants for each taste. Sunny residential apartment blocks, south orientated, with views to the marinas with its floating yachts, define the image of the Paseo Marítimo.

# Paseo Maritimo

## Referens 114890C



Escala de la calificación energética	Consumo de energía kWh / m <sup>2</sup> año	Emisiones kg CO <sub>2</sub> / m <sup>2</sup> año
A más eficiente		
B		
C	40.20	12.50
D		
E		
F		
G menos eficiente		

All information is correct to the best of our knowledge. Errors and prior sale excepted. This prospectus is purely for information purposes. Only the notarized deed of sale is legally binding.