

# Esporles

Referens 121324C



PORTA MALLORQUINA®

Your home. Our passion.

## Wonderful newly-built terraced house with pool in Esporles

Byggyta:	148 m <sup>2</sup>	Energicertifikat:	pågående
Tomt:	5 m <sup>2</sup>		
Sovrum:	3		
Badrum:	2		
Havsutsikt:	-	<b>Pris:</b>	<b>€ 755.000,-</b>



# Esporles

## Referens 121324C



### Detaljer:

We present "Es Voltor", an exciting project of 13 two-storey townhouses, fusing the essence of Mallorcan style with the modern comforts you desire. With a construction in accordance with the new European building quality standards, guaranteeing the highest level of soundproofing between houses and thermal insulation.

Each of these properties has a carefully designed distribution, including 3 bedrooms, 2 bathrooms (1 en-suite) and a toilet, offering the ideal space for your family.

From the spacious living-dining room, which opens onto a lovely terrace, to the fully fitted kitchen equipped with high-end Siemens appliances, every detail has been thought of to provide you with a comfortable and functional home.

Enjoy the panoramic mountain views and the natural environment that surrounds these homes, while relaxing on the large southwest-facing terraces. In addition, you can enjoy the sunny days in the private gardens and access the communal area, which has a refreshing swimming pool and manicured gardens.

The quality of the finishes is a priority in "Es Voltor". From the elegant built-in faucets of the Tres brand in the bathrooms, to the large format porcelain tile by Saloni, each element has been meticulously selected to guarantee your maximum comfort and satisfaction.

In addition, the underfloor heating system in all rooms ensures a warm atmosphere all year round, while the private parking space with direct and independent access adds a touch of practicality to your daily life.

Discover the tranquility and beauty of living in the Sierra de Tramuntana with "Es Voltor".

Contact us today for more information.

# Esporles

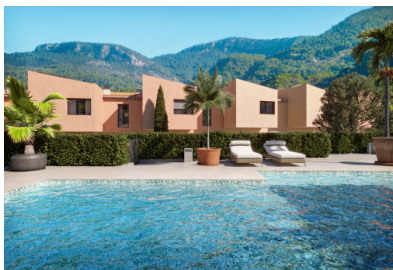
## Referens 121324C



### Läge & omgivningar:

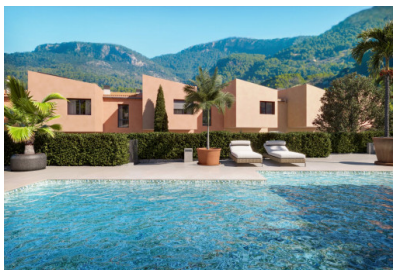
Esporles is situated in the mountains of the Tramuntana and has about 4.000 inhabitants, not far away from Palma, Valldemosa and Banyalbufar on the west coast. In earlier times the textile industry was an important element of the economy, today it is more agriculture and stock-farming and of course tourism. A walk through the village is always worthwhile.

Esporles  
Referens 121324C

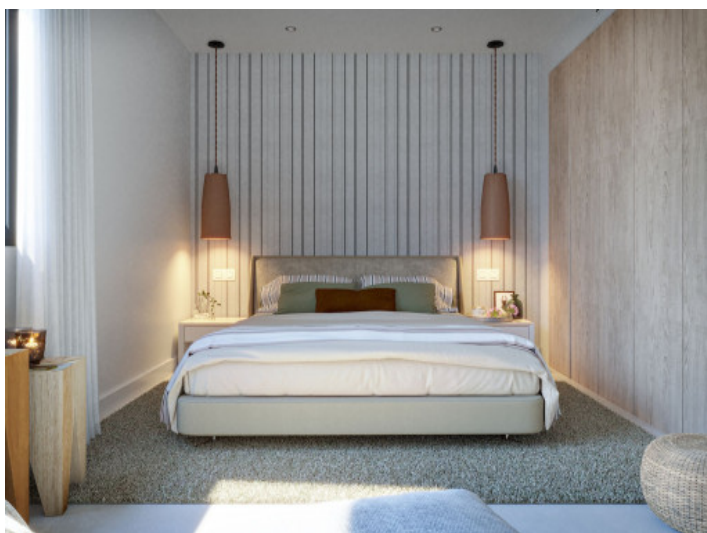


All information is correct to the best of our knowledge. Errors and prior sale excepted. This prospectus is purely for information purposes. Only the notarized deed of sale is legally binding.

Esporles  
Referens 121324C



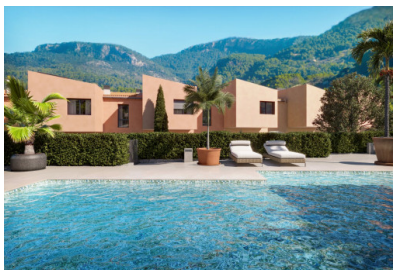
  
PORTA MALLORQUINA®  
Your home. Our passion.



All information is correct to the best of our knowledge. Errors and prior sale excepted. This prospectus is purely for information purposes. Only the notarized deed of sale is legally binding.

PORTA MALLORQUINA • C./ CONQUISTADOR 8, 07001 PALMA  
TEL. +34 971 698 242 • INFO@PORTAMALLORQUINA.COM

Esporles  
Referens 121324C



All information is correct to the best of our knowledge. Errors and prior sale excepted. This prospectus is purely for information purposes. Only the notarized deed of sale is legally binding.

PORTA MALLORQUINA • C./ CONQUISTADOR 8, 07001 PALMA  
TEL. +34 971 698 242 • INFO@PORTAMALLORQUINA.COM