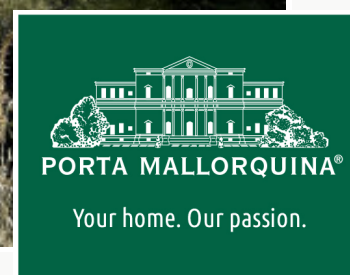


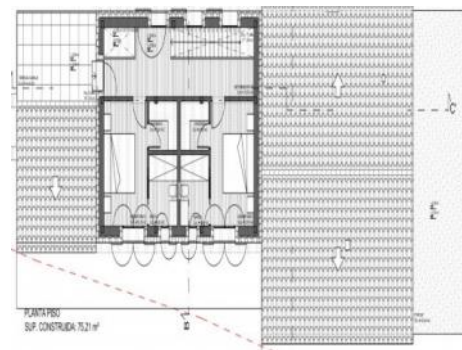
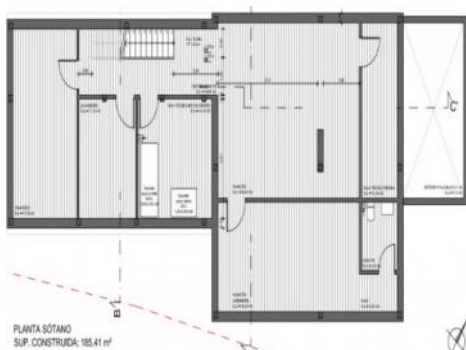
Calvia

Referens 121900



Exceptional building plot in Es Capdella complete with a unique project for the construction of a finca with pool

Byggyta:	481 m ²	Pool:	✓
Tomt:	920 m ²	Energicertifikat:	pågående
Sovrum:	3		
Badrum:	3		
Havsutsikt:	-	Pris:	€ 550.000,-



Calvia

Referens 121900



Detaljer:

Situated on the outskirts of the Tramuntana mountain range is the picturesque village of Es Capdellà. Its mixture natural stone-clad houses, rustic fincas and newly-renovated villas are inhabited by an international community, creating a lively atmosphere all year round. This exceptional building plot, overlooking the breathtaking mountain and forest landscapes, offers a unique living opportunity.

The existing project envisages a newly-built finca with a total constructed area of 481 sqm, and a living space of 310 sqm. This includes 3 double bedrooms, each with its own dressing area and en-suite bathroom, 3 guest WC's, and an openly-designed living/dining area with an open kitchen, a pantry, and a storage room. This typical, Mallorcan-style country house will surely fulfill every wish.

From its 91 sqm of terrace areas the tranquil and idyllic location can be fully enjoyed thanks to the immediately adjacent nature reserve. The neighbouring areas are protected and can not be used for construction, always allowing unobstructed and wonderful views of the surrounding nature.

A further highlight is the 49 sqm private pool, providing a real oasis to cool off whilst enjoying an undisturbed swim together with family and friends.

Further features include a complete cellar area with laundry/house-technology room, further storage space, and a 31 sqm 2-car garage.

Calvia

Referens 121900



PORTA MALLORQUINA®

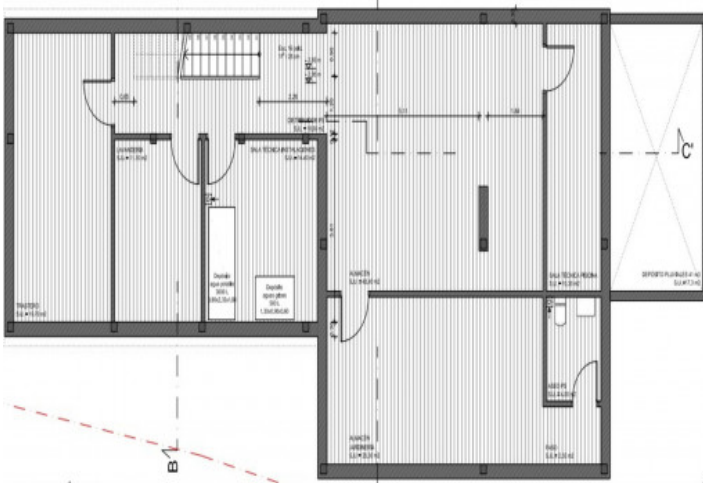
Your home. Our passion.

Läge & omgivningar:

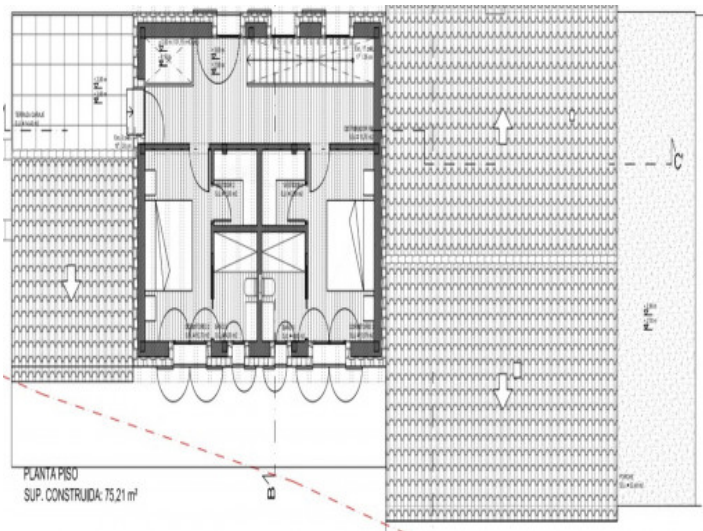
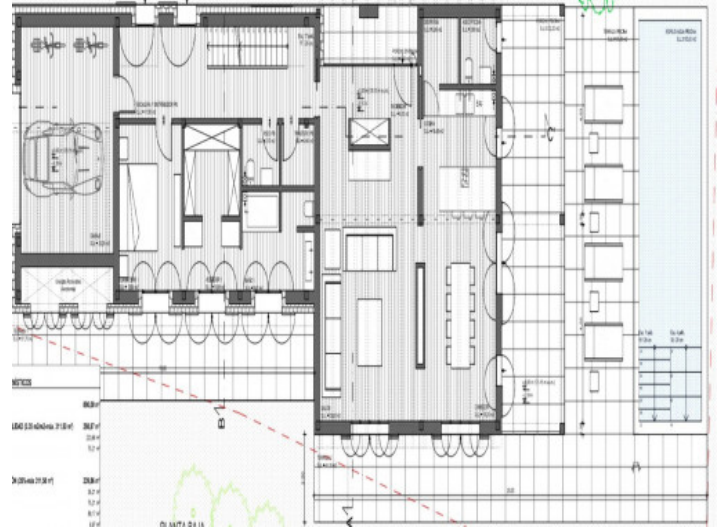
Calvià is an area located at the foot of the Tramuntana mountains, and was formerly an important village. Today it profits by tourism because of the proximity of the popular coastal villages. It is one of the most important communities of Spain. Places like Costa d'en Blanes, Illetas, Magalluf, Paguera and Santa Ponça are all part of the municipality of the district of Calvià.

Calvia

Referens 121900



PLANTA SÓTANO
SUP. CONSTRUIDA: 185,41 m²



PLANTA PISO
SUP. CONSTRUIDA: 75,21 m²

All information is correct to the best of our knowledge. Errors and prior sale excepted. This prospectus is purely for information purposes. Only the notarized deed of sale is legally binding.