

# Llucmajor

Referens 113630



PORTA MALLORQUINA®

Your home. Our passion.

## Unique loft-style finca with plenty of privacy in Llucmajor

Byggyta:	631 m <sup>2</sup>	Pool:	✓
Tomt:	15.100 m <sup>2</sup>	Energicertifikat:	pågående
Sovrum:	2		
Badrum:	2		
Havsutsikt:	✓	<b>Pris:</b>	<b>€ 1.650.000,-</b>



# Llucmajor

## Referens 113630



### Detaljer:

This property is one of a kind and for those looking to buy something unique and not available anywhere else. The loft style house is completely open plan with few interior walls yet still affords plenty of privacy. Every detail has been carefully thought out and complemented by the use of top-quality materials.

Inside are parquet floors throughout and concrete columns and the use of clever design features divide individual spaces whilst floor to ceiling windows guarantee light flooded rooms.

The open plan design flows from the entrance into a living and dining area with an industrial style kitchen, making entertaining easy. The house also comprises 2 bedrooms and 2 bathrooms (one en suite) plus a dressing room and 2 guest toilets. There is a home office and a winter garden for enjoying the late autumn sun plus a utility room.

Outside the 15,000 sqm plot is abundant with mature trees that ensure privacy and also create a feeling of calm and wellbeing. The lovely pool is ideal for cooling off and spacious terraces offer plenty of sunbathing space.

Double glazing and security glass, gas central heating, solar panels and an automatic entrance gate are just some additional amenities underline the quality of this property.

# Llucmajor

## Referens 113630



### Läge & omgivningar:

In terms of surface area, Llucmajor is the largest municipal county on the island of Majorca and is located in the south. Its population amounts to 20,000 inhabitants.

The small city includes 4 supermarkets, some well loved cafés and tapa-bars, and even a thrice-weekly fruit and vegetable market, taking place in the very recently renovated town centre, with its Plaza de España and the second largest church on the island.

The picturesque hill-location of Randa on the mountain of the same name, which is the most elevated point in the island's centre, houses three sanctuaries, and is located slightly north of the town. Llucmajor has developed into an economic and popular residential location, due to the new motor-way connection to Palma. The Marriott Son Antem Golf Resort and Spa, and nearby yacht clubs make Llucmajor an interesting and central location for planning pass-times and excursions.

The Es Trenc natural beach, one of the nicest on the island and with a Caribbean similarity, lies just 15 car minutes from Llucmajor.



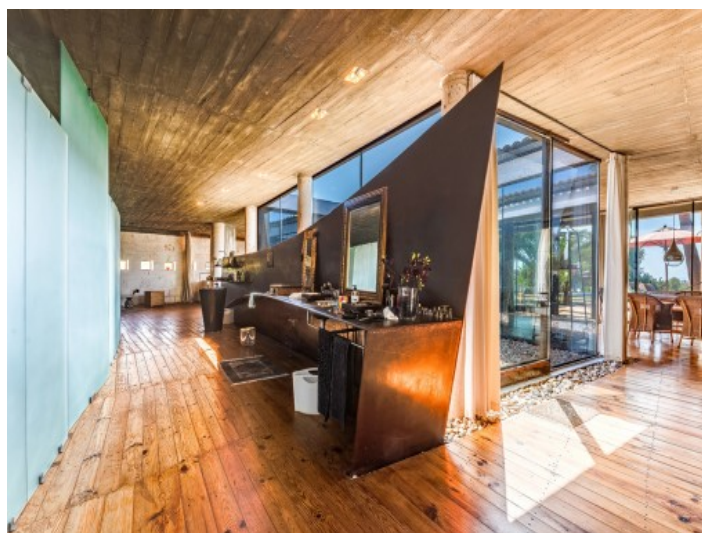
Llucmajor  
Referens 113630



All information is correct to the best of our knowledge. Errors and prior sale excepted. This prospectus is purely for information purposes. Only the notarized deed of sale is legally binding.



Llucmajor  
Referens 113630



All information is correct to the best of our knowledge. Errors and prior sale excepted. This prospectus is purely for information purposes. Only the notarized deed of sale is legally binding.



Llucmajor  
Referens 113630



All information is correct to the best of our knowledge. Errors and prior sale excepted. This prospectus is purely for information purposes. Only the notarized deed of sale is legally binding.